

A large, stylized letter 'D' in a dark grey color, set against a light grey background. The 'D' is composed of a vertical bar on the left and a curved shape on the right. The word 'DREAME' is written in white, uppercase, sans-serif font across the middle of the vertical bar.

DREAME

**Dreame Roboticmower A1
User Manual**

TABLE OF CONTENTS

1 Safety Instructions	P03
2 What's in the Box	P07
3 Product Overview	P08
4 Installation	P09
5 Preparations before Use	P11
6 Map Your Garden	P14
7 Operation	P20
8 Dreamehome App	P25
9 Maintenance	P27
10 Battery	P31
11 Winter Storage	P31
12 Transport	P31
13 Troubleshooting	P32
14 Specifications	P35

1 Safety Instructions

1.1 General safety instructions

- Carefully read and understand the user manual before using the product.
- Only use the equipment recommended by Dreame with the product. Any other usage is incorrect.
- Do not allow children to be in the vicinity or play with the machine when it is operating.
- Do not use the product in areas where people are unaware of its presence.
- When manually operating the product with the Dreamehome App, do not run. Always walk, watch your steps on slopes, and maintain balance at all times.
- Avoid using the product when there are people, especially children or animals, in the work area.
- If operating the product in public areas, place warning signs around the work area with the following text: "Warning! Automatic lawn mower! Keep away from the machine! Supervise children!"
- Wear sturdy footwear and long trousers when operating the product.
- To prevent damage to the product and accidents involving vehicles and individuals, do not set work areas or transport paths across public pathways.
- Do not touch moving hazardous parts, such as the blade disc, before it has come to a complete stop.
- Seek medical aid in case of injury or accidents.
- Set the product to OFF before clearing blockages, performing maintenance, or examining the product. If the product vibrates abnormally, inspect it for damage before restarting. Do not use the product if any parts are defective.
- Do not install the main cable in areas where the product will cut. Follow the instructions provided for cable installation.
- Only use the charging station included in the package to charge the product. Incorrect use may result in electric shock, overheating, or corrosive liquid leakage from the battery. In case of electrolyte leakage, flush with water/neutralizing agent and seek medical aid if the corrosive liquid comes into contact with your eyes.
- When connecting the main cable to the power outlet, use a residual-current device (RCD) with a maximum tripping current of 30 mA.
- Only use original batteries recommended by Dreame. The safety of the product cannot be guaranteed with non-original batteries. Do not use non-rechargeable batteries.
- Keep extension cords away from moving hazardous parts to avoid damage to the cords which can lead to contact with live parts.
- The illustrations used in this document are for reference only. Please refer to the actual products.
- Never allow children, persons with reduced physical, sensory or mental capabilities or lack of experience and knowledge or people unfamiliar with these instructions to use the machine, local regulations may restrict the age of the operator.
- Do not connect or touch a damaged cable until it is disconnected from the power outlet. If the cable becomes damaged during operation, disconnect the plug from the power outlet. A worn or damaged cable increases the risk of electrical shock and should be replaced by service personnel.
- Do not push A1 forcefully or quickly, as this may damage A1.

1.2 Safety instructions for installation

- Avoid installing the charging station in areas where people may trip over it.
- Do not install the charging station in areas where there is a risk of standing water.
- Do not install the charging station, including any accessories, within 60 cm/24 in of any combustible material. Malfunctioning or overheating of the charging station and power supply can pose a fire hazard.
- For users in the USA/Canada: If installing the power supply outdoors, there is a risk of electric shock. Only install it in a covered Class A GFCI receptacle (RCD) with a weatherproof enclosure, ensuring that the attachment plug cap is inserted or removed.

1.3 Safety instructions for operation

- Keep your hands and feet away from the rotating blades. Do not place your hands or feet near or below the product when it is turned on.
- Do not lift or move the product when it is turned on.
- Use the park mode or set the product to **OFF** when there are people, especially children or animals, in the work area.
- Ensure that there are no objects such as stones, branches, tools, or toys on the lawn. Otherwise, the blades may be damaged when they come into contact with an object.
- Do not put objects on top of the product or charging station.
- Do not use the product if the **STOP** button is not functioning.
- Avoid collisions between the product and people or animals. If a person or animal comes in the path of the product, stop it immediately.
- Always set the product to **OFF** when it is not in operation.
- Do not use the product simultaneously with a pop-up sprinkler. Utilize the Schedule function to ensure that the product and pop-up sprinkler do not operate at the same time.
- Avoid placing a connection channel where pop-up sprinklers are installed.
- Do not operate the product in the presence of standing water in the work area, such as during heavy rain or water pooling.

1.4 Safety instructions for maintenance

- Set the product to **OFF** when performing maintenance.
- After washing, ensure that the product is placed on the ground in its normal orientation, not upside down.
- Do not reverse the product to clean the chassis. If you do reverse it for cleaning purposes, make sure to restore it to its proper orientation afterward. This precaution is necessary to prevent water from entering the motor and potentially affecting normal operation.
- Disconnect the plug from the charging station or remove the disabling device before cleaning or performing maintenance on the charging station.
- Do not use a high-pressure washer or solvents to clean the product.

1.5 Battery safety






Lithium-ion batteries can explode or cause a fire if disassembled, short-circuited, exposed to water, fire, or high temperatures. Handle them with care, do not dismantle or open the battery, and avoid any form of electrical/mechanical abuse. Store them away from direct sunlight.






1. Only use the battery charger and power supply provided by the Manufacturer. The use of an inappropriate charger and power supply can cause electric shocks and / or overheating.
2. DO NOT ATTEMPT TO REPAIR OR MODIFY BATTERIES! Repair attempts may result in severe personal injury, due to explosion or electrical shock. If a leak develops, released electrolytes are corrosive and toxic.
3. This appliance contains batteries that are only replaceable by skilled persons.

1.6 Residual risks

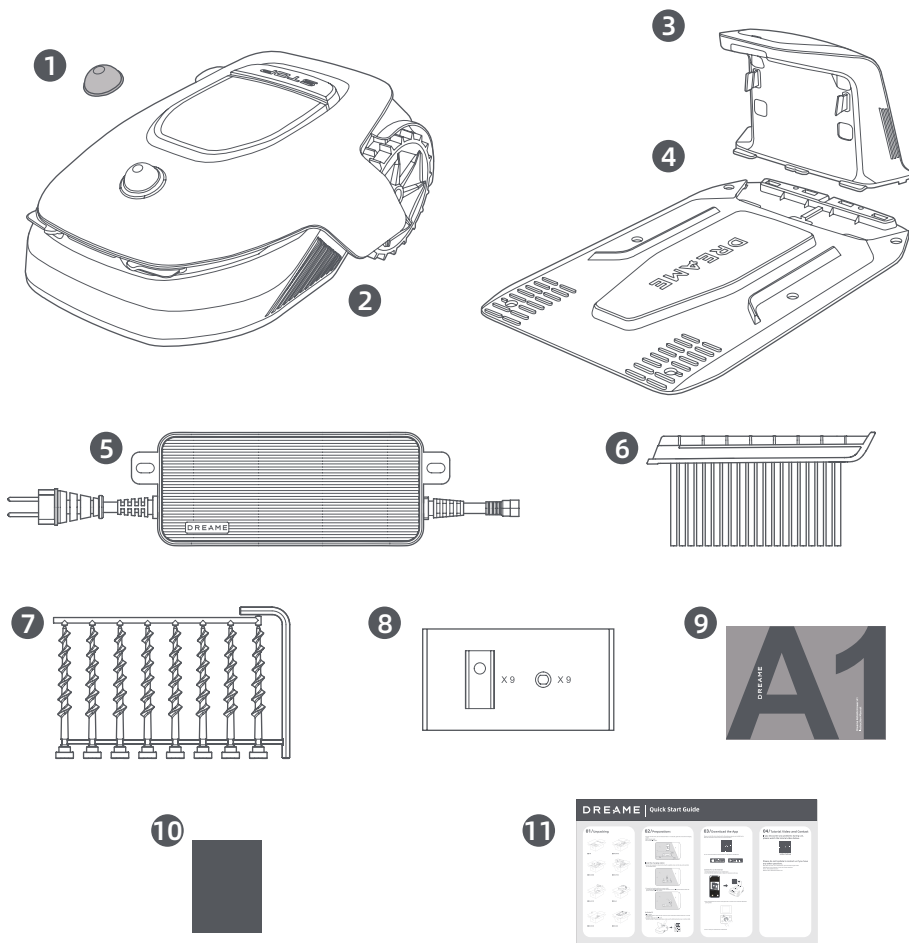
To avoid injuries, wear protective gloves when replacing the blades.

1.7 Symbols and Decals

	<p>WARNING - Read user instructions before operating the machine.</p>
	<p>WARNING - Keep a safe distance from the machine when operating.</p>
	<p>WARNING - Operate the disabling device before working on or lifting the machine.</p>
	<p>WARNING - Do not ride on the machine.</p>
	<p>WARNING - It is not permitted to dispose of this product as normal household waste. Ensure that the product is recycled in accordance with local legal requirements.</p>

	This product conforms to the applicable EC Directives.
	Class III
	Before charging, read the instructions.
	Direct current
	Class II

2 What's in the Box



1 LiDAR protective cover

3 Charging tower
(with a 10 m extension cable)

5 Power supply

7 Screws × 8, Hex key

9 User manual

11 Quick start guide

2 A1

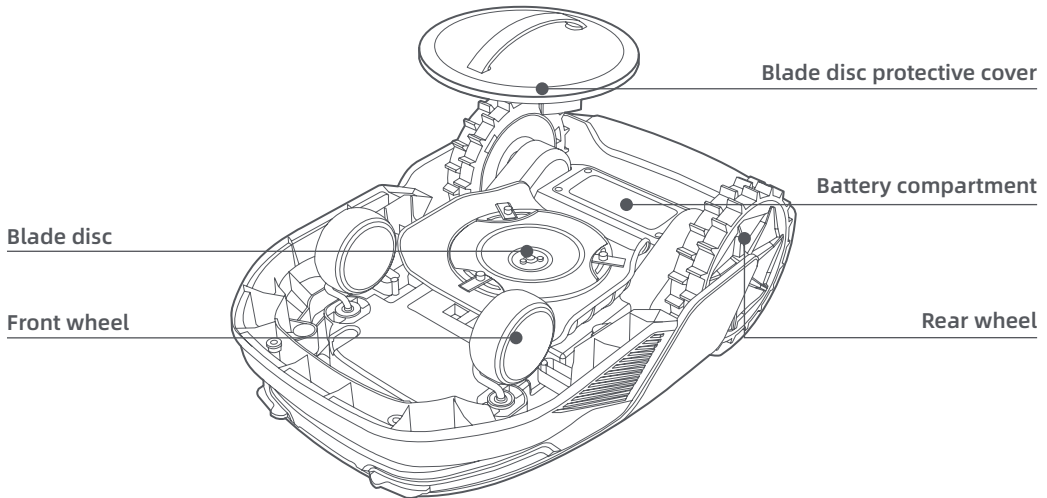
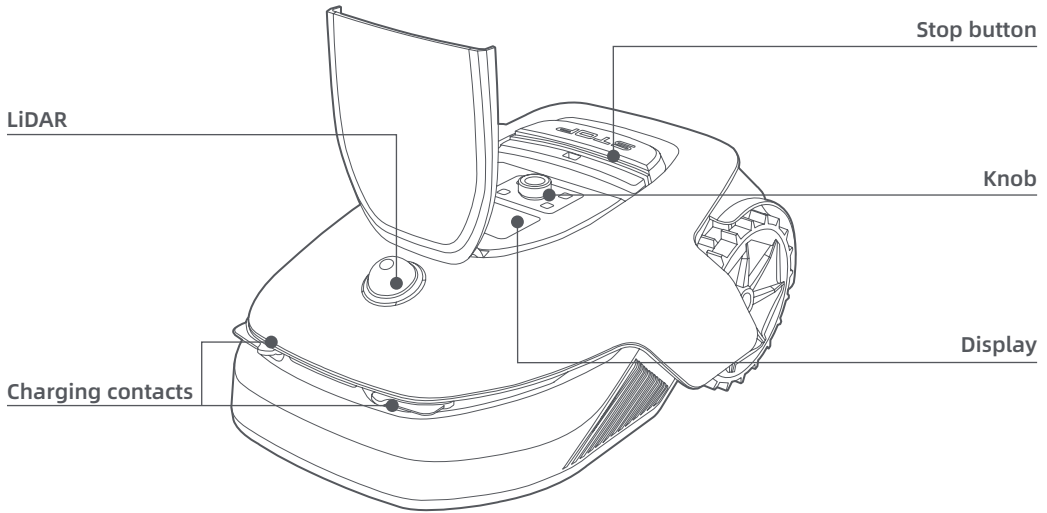
4 Baseplate

6 Cleaning brush

8 Spare blade kits × 9

10 Lint-free cloth

3 Product Overview



Sensor

Name	Description
Lidar	Obtains environmental information and facilitates A1's positioning, obstacle avoidance and sensing of water and dirt. Detection range: 70 m with 360° horizontal and 59° vertical wide angle.

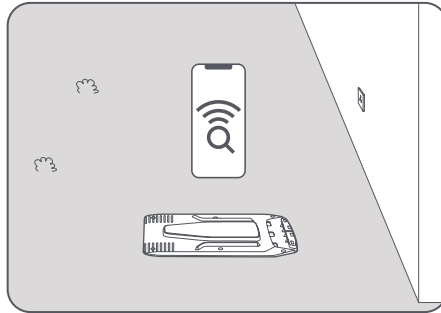
4 Installation

4.1 Select a suitable location

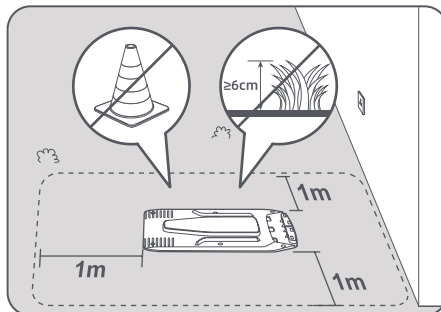
- Place the charging station on a level surface near the edge of the lawn and a power outlet. It is recommended to place the charging station in an area with good Wi-Fi signal strength.

Note: Use your mobile device to help check the Wi-Fi signal strength of the location. Good Wi-Fi signal strength improves the stability of connection between A1 and app.

Note: Make sure the ground is soft enough to allow screw installation.

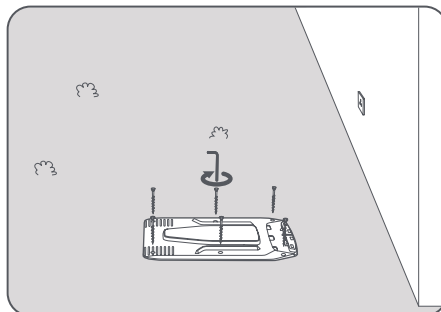


- Keep at least **1m** of free space with no obstacles to the left, right and in front of the charging station. Make sure that the grass around the location is shorter than **6 cm**. If the grass is taller, please mow it with a push mower first. Tall grass may make it difficult for A1 to return to the charging station.

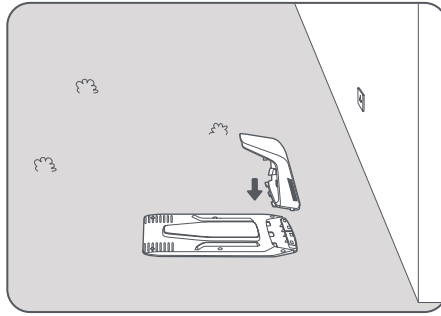


4.2 Install the charging station

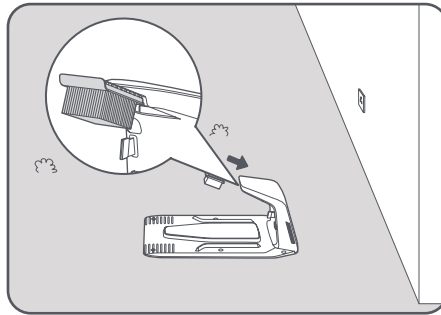
- Secure the baseplate to the ground with supplied screws using the hex key.



- 2 Insert the charging tower to the baseplate until you hear the click.

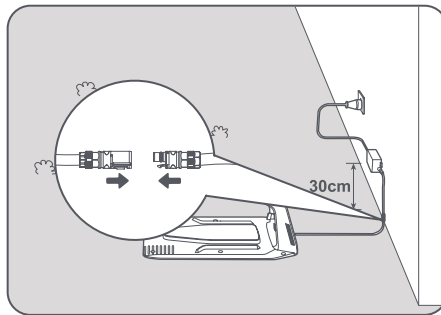


- 3 Insert the cleaning brush into the charging tower by aligning the tongue with the groove.



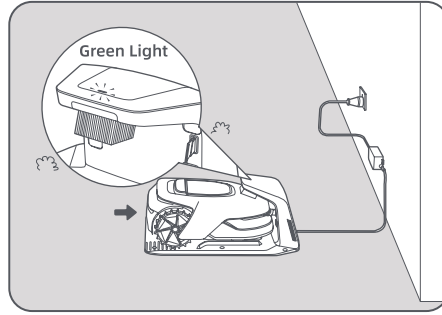
- 4 Connect the power supply to the extension cable and then connect to a power outlet. Please keep the power supply at least **30 cm** above the ground.

Note: The LED indicator on the charging station will be constant **blue** if all connections are correct.



- 5 Put A1 in the charging station to charge. Make sure the charging contacts on A1 and the charging station are connected correctly.

Note: The indicator light will blink green if A1 successfully docks in the charging station.



LED Indicator on the charging station

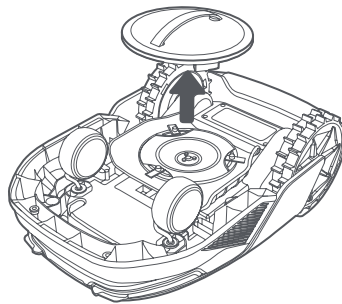
LED Indicator Light Colour	Meaning
Blinking/solid red	1. Charging station has a problem (for example a charging current or voltage problem).
	2. A1 docks in the charging station but the charging is abnormal (for example charging contacts have a short circuit).
Solid blue	The charging station has power. A1 is not in the charging station.
Blinking green	A1 is charging in the charging station.
Solid green	A1 is in the charging station and fully charged.

5 Preparations before Use

When A1 is turned on for the first time, there are some basic settings to do before A1 is ready to start working.

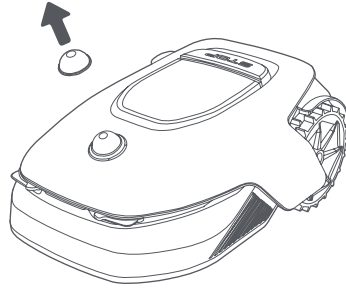
❶ Place A1 on a soft surface and turn it upside down to remove the protective cover from the blade disc.

⚠ **Warning:** Make sure the LiDAR protective cover is on the LiDAR.



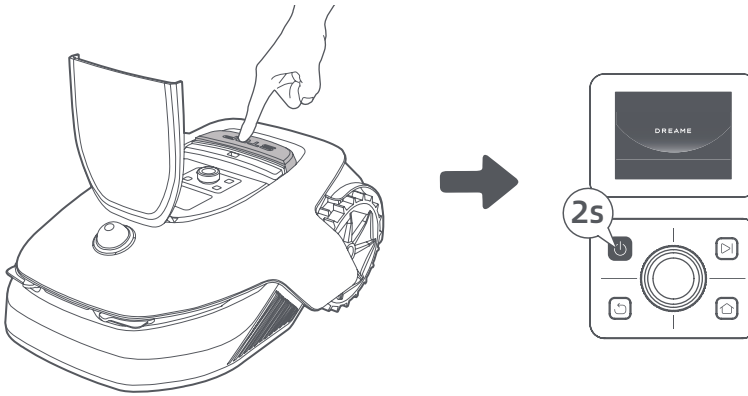
DREAME

- 2 Remove the LiDAR protective cover.



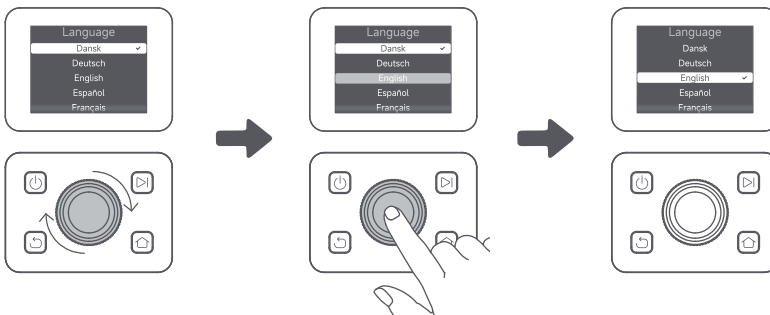
- 3 Press **Stop** button to open the cover of the control panel. Press and hold the **Power** button on the control panel for **2 seconds** to turn on A1.

Note: A1 will automatically turn on when it docks in the charging station.



- 4 Select the language you prefer

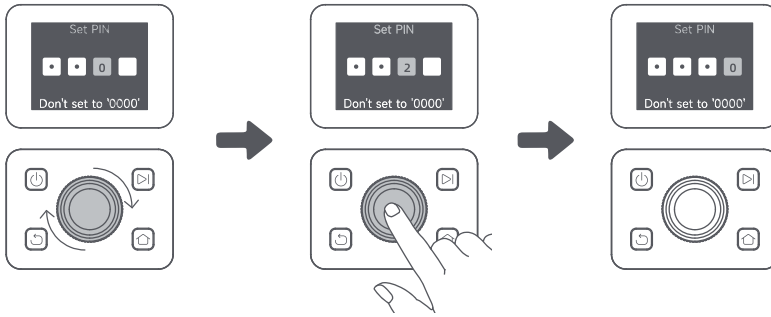
Turn the knob clockwise to go down and anticlockwise to go up to select your language. Press the knob to confirm.



- 5 Set PIN code

1. Turn the knob to select number from 0 to 9. Turn it clockwise to increase the number from 0 to 9 and turn it anticlockwise to decrease the number. Press the knob to set the next digit. To modify the previous digit, turn the knob anticlockwise until the number becomes 0 and keep turning it one time more.

Note: Please do not set the PIN code to "0000".



2. Enter the PIN code again to complete setting the PIN code.

Note: If two passwords do not match, please set the new password again.

6 Connect A1 to the internet

Please scan the QR code to download the Dreamehome app on your mobile device. After the installation, please create an account and log in.

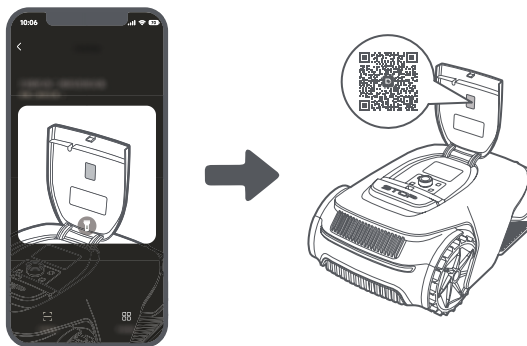


You can also download Dreamehome app from App Store or Google Play.

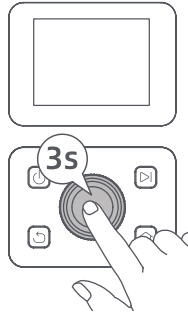


1) Bluetooth connection

1. Enable Bluetooth function on your mobile device.
2. Scan the QR code inside the cover or select A1 manually via the App.



3. Press and hold the **knob** on the control panel for **3 seconds** and A1 will enter Bluetooth pairing mode.



4. Pair A1 with your mobile device via Bluetooth.

Note: Make sure that your mobile device is within **10 m** of A1.

2) Wi-Fi connection

Make sure A1 and your mobile device are on the same Wi-Fi network. Please follow the in-app guidance to complete the connection.

Note: Please use a single-band network of 2.4 GHz frequency or dual-band network of 2.4/5 GHz frequency.

Note: You can also purchase the Link Module to remotely control A1 without Wi-Fi connection.

How to unbind A1?

A1 is automatically bound to the Dreamehome account once pairing is successful. Each device can only be bound to one account. It cannot be bound to another account at the same time.

To pair A1 with a new account, you need to unbind it first. Please follow the steps below to unbind A1:

1. Go to "Device" in the app
2. Tap the name of your A1 on the upper left corner.
3. Tap "Delete" to unbind the device from the current account.

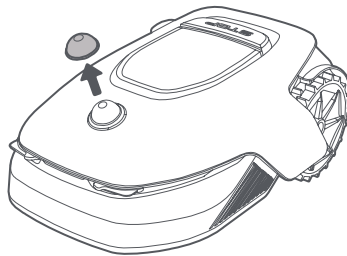
How to log out of your Dreamehome account or delete it?

To log out, go to **Me > Settings > Account > Log Out**. To delete the account, go to **Me > Settings > Account > Delete Account**.

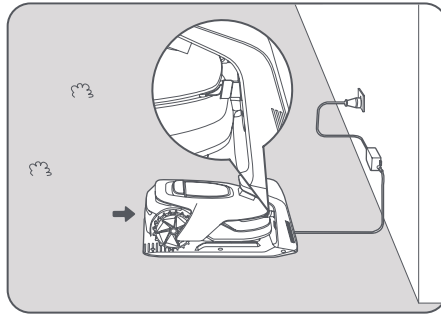
6 Map Your Garden

Before mapping, please check the following:

- The battery level of A1 is more than **50%**.
- Protective cover of the LiDAR is removed.

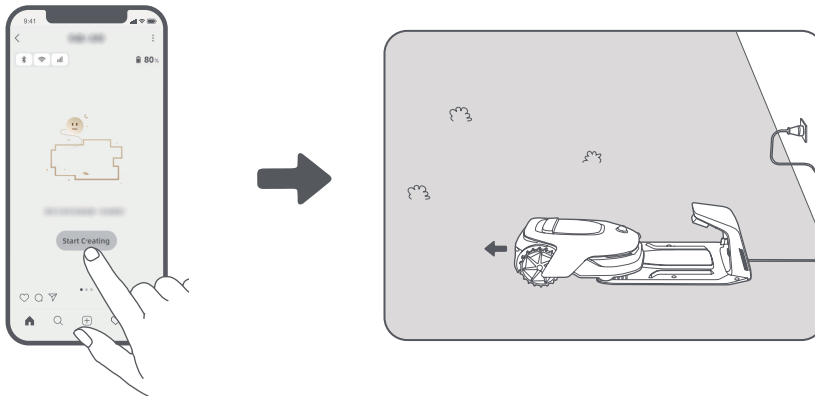


- A1 correctly docks in the charging station.

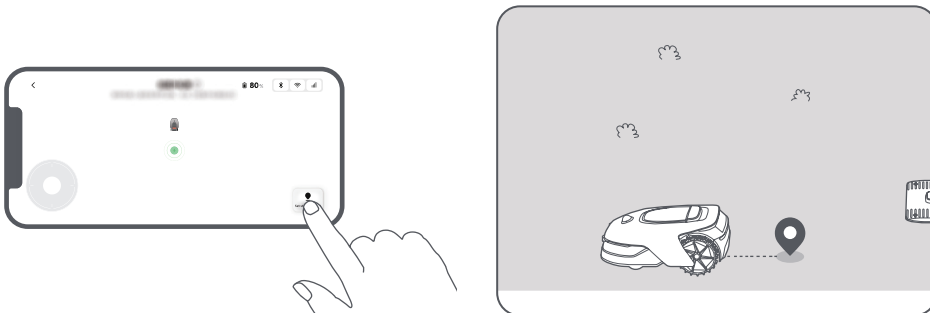


6.1 Create the boundary

- 1 Tap **"Start Creating"** via the app, and A1 will check its status and calibrate. It will automatically leave the charging station to do the calibration. Please be careful.



- 2 Remote control A1 to the edge of your lawn and tap **"Set Starting Point"** to confirm the starting point of the boundary.

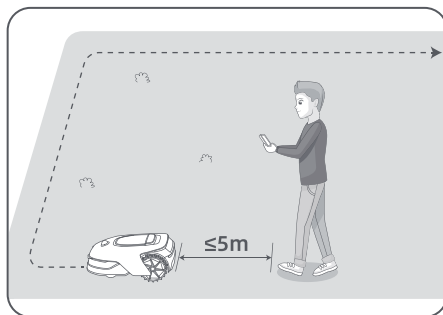


- 3 Remote control A1 to move along the edge of your lawn to create the work area. When remotely controlling A1 to create the boundary, please bear in mind:

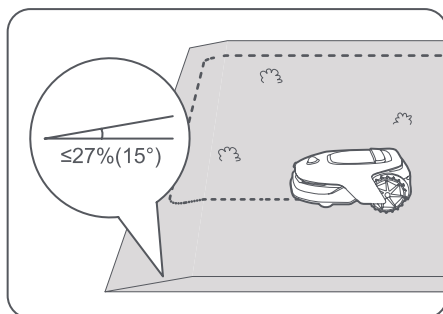
⚠ Warning: Do not manually move A1 when creating the boundary, otherwise the mapping may fail.

⚠ Warning: When mapping begins via remote control, do not remotely dock A1 in the charging station until the mapping is complete. Otherwise, the LiDAR may be blocked, which can cause the mapping to fail.

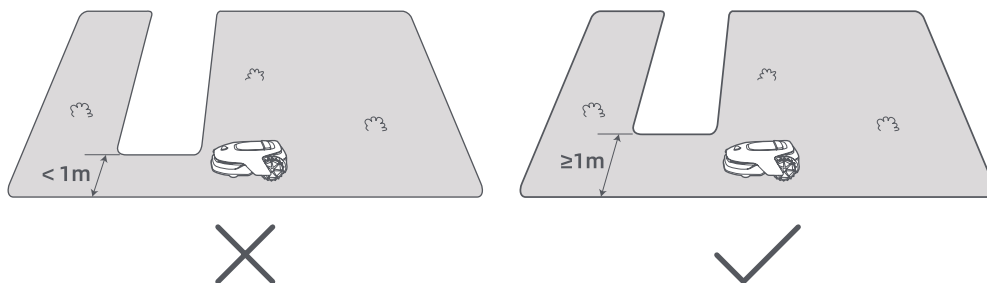
- Walk within **5 m** behind A1 when remotely controlling it.



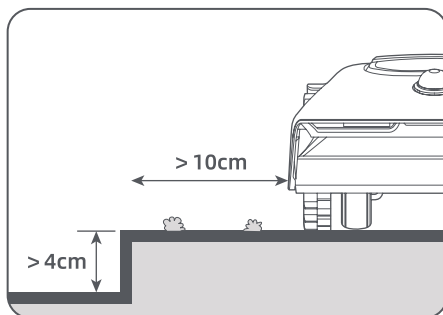
- Do not create the boundary on a slope that exceeds **27%**.



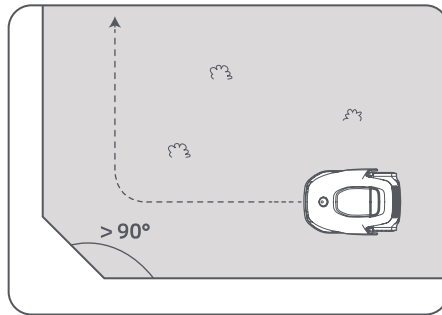
- Avoid creating boundaries inside corridors narrower than **1 m**.



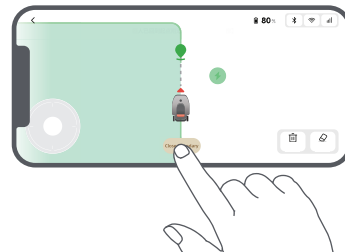
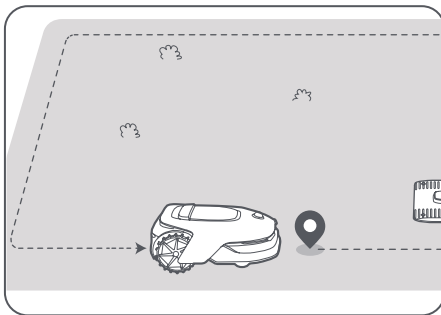
- If there is a height difference of **4 cm** between the edge of your lawn and the adjacent ground, please keep A1 at least **10 cm** from the edge of your lawn.



- Make sure the turning angles are greater than 90° .

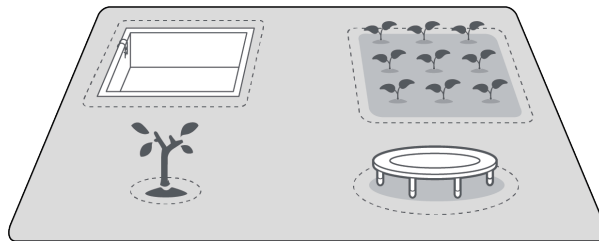


- 4 When A1 returns to the place **1 m** near the starting point, you can tap **"Close Boundary"** and the boundary will automatically be completed.



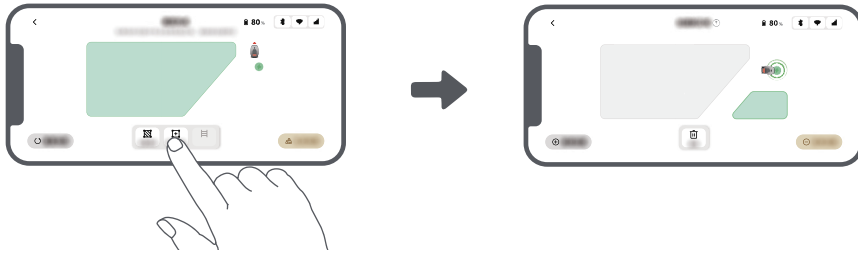
6.2 Set No-go zone

Though A1 can automatically avoid obstacles, it is still necessary to set up no-go zones for areas which A1 is prohibited from entering such as swimming pools and sandpits. For objects you want to protect (such as a flowerbed, a trampoline, a vegetable patch or a naked tree root), please set them as no-go zones. You can remote control A1 to create no-go zones via the app, or go to **"Map Editing"** to directly draw or delete no-go zones on the map.



6.3 Set multiple zones

If your lawn is separated by roads or you have several isolated lawns, you can tap **"Work zone"** in the app to continue creating work area via remote control. You can also add, delete or modify the zones in **"Map Editing"** when the map is finished.

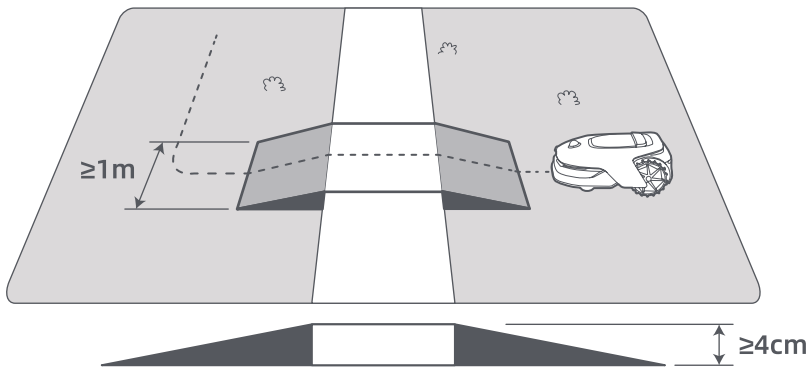


6.4 Set path

For isolated zones, please create a path to connect them. Isolated zones without a path will be inaccessible to A1.

Note: A1 can move in the path, but does not mow grass.

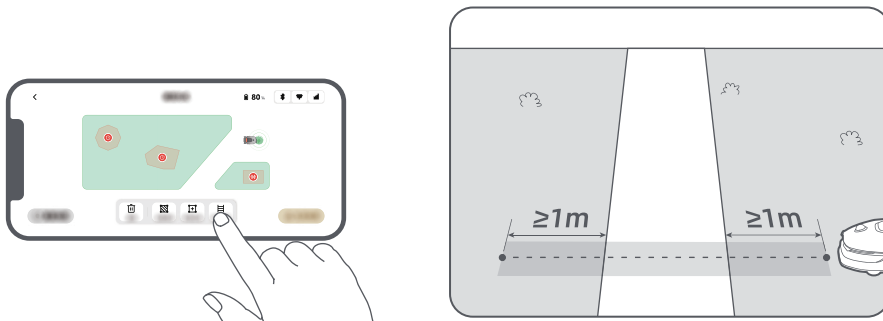
Note: If your lawn is divided by passages higher than **4 cm**, place an object with a slope equal in height to the passage (such as a ramp).



• To connect two isolated work zones

For isolated areas, please create paths to connect them, otherwise they will be inaccessible to A1. Tap "Path" and remote control A1 to create a path.

Note: Make sure the beginning and end of the path are in the work area. Keep at least **1 m** distance between the beginning/end of the path and the boundary.

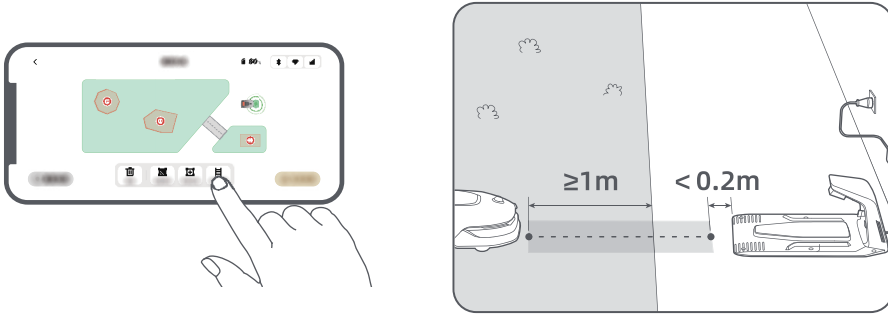


• To connect the work area and the charging station

If your charging station is not in the work area, a path should be created to connect it to the work area. Tap "Path", and remote control A1 to create a path that allows it to return to the station.

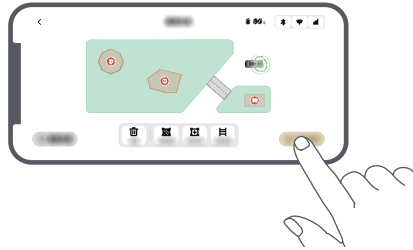
Note: When creating a path, ensure that one end overlaps with the work area by at least 1 metre ($\geq 1\text{ m}$), and the other end is less than 0.2 metres ($< 0.2\text{ m}$) in front of the station.

⚠ Warning: When creating paths to connect the work area and the charging station, do not remotely dock A1 in the charging station. Otherwise, the LiDAR may be blocked, which can cause the mapping to fail.



6.5 Finish map

Tap "Finish Map" when work areas, paths and no-go zones are completed. A1 should be inside the map when the map is finished, otherwise you will be prompted to remote control it to move back inside the map.

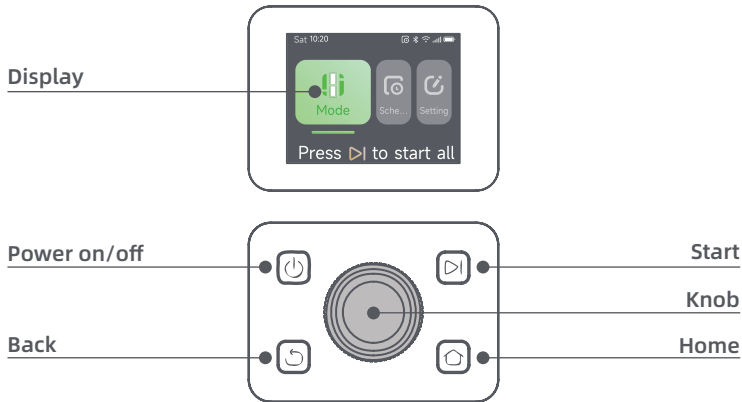


6.6 Map learning





When the map is finished, A1 will perform a self check. If there are areas with insufficient LiDAR signal coverage, please follow the in-app guidance and tap "Start Map Learning". A1 will go to these areas to explore and learn autonomously. When learning is completed, A1 will automatically return to the charging station.

7 Operation

7.1 Get familiar with the control panel



Icon	Status
	Battery level (Shows the current battery level.)
	Charging (A1 successfully docks in the charging station.)
	Bluetooth (A1 is connected to the app via Bluetooth.)
	Wi-Fi (A1 is connected to the app via a Wi-Fi network.)
	Link service (Link service is activated.)
	Schedule (A task is scheduled for today.)

Button	Function
Power 	Ensure that A1 is outside the charging station. Press and hold the Power button for 2 seconds to turn it on or off.
Start 	Press Start button and close the cover in 5 seconds to start mowing. The task will be cancelled if the cover is not closed in 5 seconds.
Home 	Press Home button and close the cover in 5 seconds to send A1 back to the station to charge. The task will be cancelled if the cover is not closed in 5 seconds.
Back 	Press Back button to go back to the previous page.
Knob	Press the knob to confirm the selection in the menus.
	Press and hold the knob for 3 seconds to enable Bluetooth pairing mode on A1.
	Turn the knob clockwise/anticlockwise to navigate the menu.
Start + Back	Press and hold Start button and Back button together for 3 seconds to factory reset A1. The PIN code will not be erased.
Home + Back	Press and hold Home button and Back button together for 3 seconds to enter the About page in Settings. The About page will disappear in 5 seconds.
Knob + Back	Press and hold the knob and Back button together for 3 seconds to reset PIN code.
Stop	Press Stop button to open the cover of the control panel and stop A1. PIN code must be entered on the control panel to resume the operation of A1.

Menu structure overview

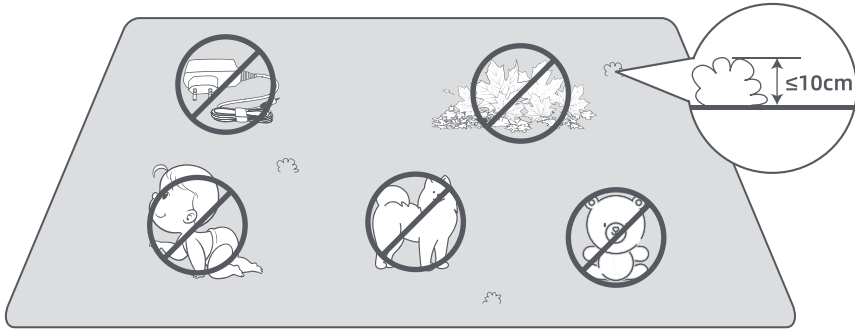


*It might be updated depending on the software version.

7.2 Start mowing for the first time

Tips before mowing:

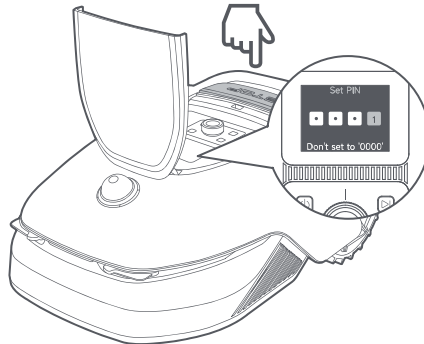
- Use a push mower to mow the grass to a height of no more than **10 cm**.
- Clear the obstacles including debris, leaf piles, toys, wires and stones from the lawn. Make sure no children or pets are on the lawn when A1 is mowing.
- Fill in the holes in the lawn.
- Set your mowing preferences in the app in advance (such as mowing efficiency, mowing height and mowing direction).



Press **Start** button on the control panel and **close the top cover** in 5 seconds. A1 will leave the charging station and start mowing. You can also tap **"Start"** in the app to start mowing.

• **Start via the control panel**

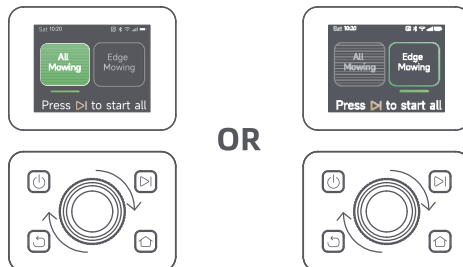
1. Press **Stop** button to open the cover and enter the PIN code.



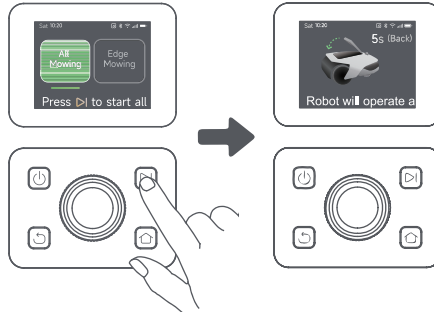
2. Select **"Modes"** on the display and press the knob.



3. Turn the knob to select the mowing mode.



4. Press **Start** button and **close the top cover** in 5 seconds. A1 will start mowing.



• Start via the app

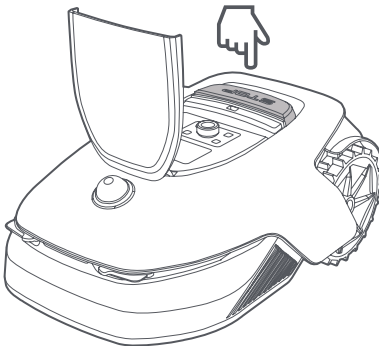
1. Open the app.
2. Select a mowing mode and tap "**Start**" to start mowing.



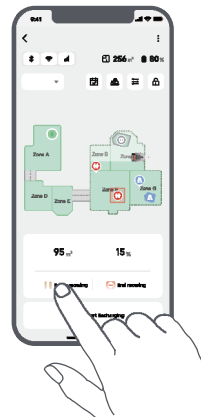
7.3 Pause

To pause the current mowing task, you can press the **Stop** button on A1 or tap "**Pause**" in the app.

Note: A1 will be locked and cannot be started directly through app after **Stop** button is pressed. To resume mowing, please enter your preset PIN code on the control panel first.

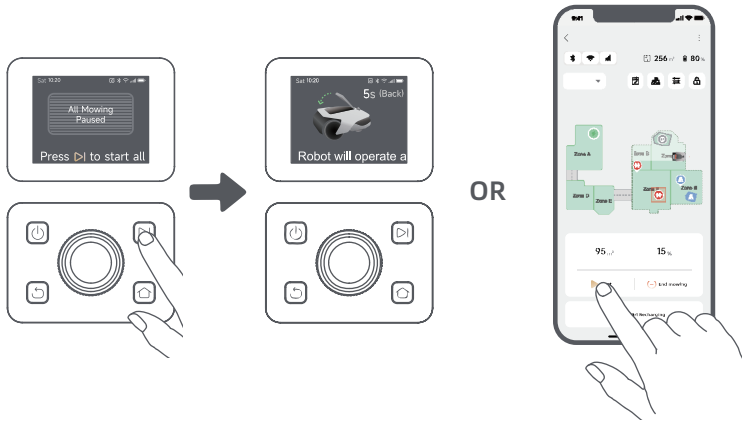


OR



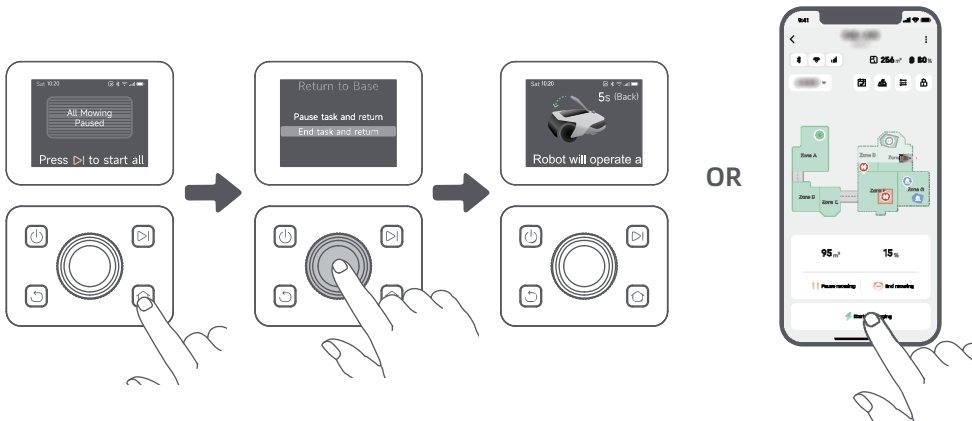
7.4 Resume

To resume the task when A1 is paused, press **Start** button on the robot and **close the cover** in 5 seconds. A1 will resume the previous mowing task. You can also tap **"Continue"** in the app to resume the mowing task.



7.5 Return to the charging station

To stop the mowing task and send A1 back to the charging station, confirm your PIN code on the control panel and then press **Home** button. Confirm to end the task and **close the cover** in 5 seconds. A1 will automatically return to the charging station to charge. You can also tap **"Return to Station"** in the app to send A1 back to the charging station.



8 Dreamehome App

Where you can explore more

Dreamehome App is more than a remote control. There are many things you can do through the app: completing various settings remotely, experiencing different mowing modes, editing the map freely and adjusting mowing schedules. Moreover, you can view the 3D map of your lawn directly in the app.

8.1 Mowing modes

A1 offers various mowing modes. You can switch between modes through the app.



8.2 Schedule

After the first map is completed, A1 automatically creates two weekly mowing schedules according to the lawn size, which are "**Spr & Sum Schedule**" and "**Aut & Win Schedule**". You can tap "**Schedule**" in the app to do detailed schedule settings. With the schedule function, you can completely leave the daily mowing work to A1. You only need to maintain A1 regularly.

Note: If you worry that A1 may disturb you or your neighbours when it works autonomously during certain hours, you can go to **Settings > Do Not Disturb** and set Do Not Disturb time in the app.



8.3 Child lock

If you worry that children may operate A1, you can enable "**Child Lock**" function in the app. With this function enabled, A1 will be locked if no operations are performed for 5 minutes when the cover is open.



8.4 Rain protection

If you worry that adverse weather conditions may affect the mowing work, you can enable "**Rain Protection**" function in "**Settings**" on the control panel or in the app. When this function is enabled, A1 automatically pauses mowing and returns to the charging station when it senses water on the LiDAR. You can set the rain protection time in the app.



8.5 Frost protection

When temperature is below **6 °C**, mowing operations will cause permanent damages to the lawn. Battery will not be able to charge due to self-protection. You can enable "**Frost Protection**" function in "**Settings**" on the control panel or in the app. The function enables A1 to automatically pause mowing and return to the charging station when ambient temperature is **≤ 6 °C**. It will automatically resume working when temperature is above **11 °C**.



8.6 Lift alarm

With this function enabled, A1 will be locked and alarm will go off immediately if it is lifted.



8.7 Off-map alarm

With this function enabled, A1 will be locked and alarm will go off immediately if it is away from the map. **(This function requires installation of Link Module.)**



8.8 Real-time location

With **Link Module**, you can view the current location of A1 in Google Map.



Note: Dreame development team will continuously conduct **OTA (Over-the-Air)** updates and maintenance on the firmware and app. Please check for update notifications or enable the **Auto-update function** to keep the firmware and app up-to-date and enjoy more features.

9 Maintenance

For better performance and lifespan of A1, please clean it regularly and replace worn parts according to the frequency below:

Part	Replacement Frequency
Blades	Every 6–8 weeks or sooner
Cleaning brush	Every 12 months or sooner

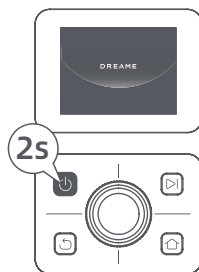
9.1 Cleaning

⚠ Warning: Before cleaning, please turn off A1 and unplug the charging station.

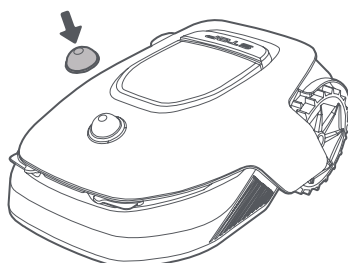
⚠ Warning: Please make sure LiDAR protective cover is on the LiDAR before turning A1 upside down to avoid damages to the LiDAR.

• The body of A1:

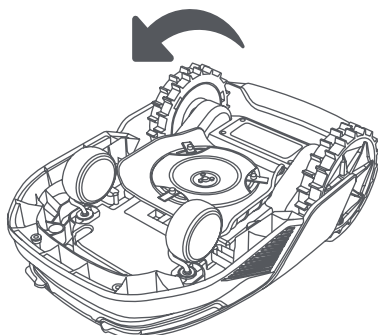
1. Turn A1 off.



2. Put the LiDAR protective cover on the LiDAR.



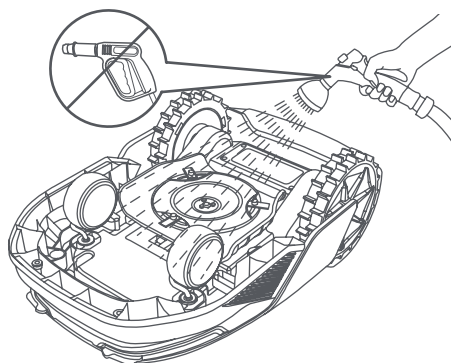
3. Turn A1 upside down.



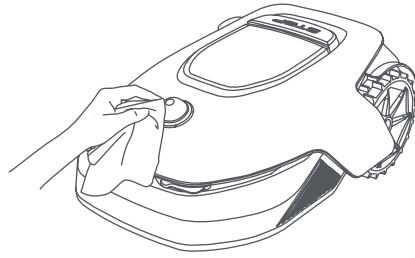
4. Clean the body of A1, blade disc and chassis with a hose.

⚠ Warning: Do not touch the blades when cleaning the chassis. Please wear gloves when cleaning.

⚠ Warning: Please do not use a high-pressure washer for cleaning. Do not use detergents for cleaning.

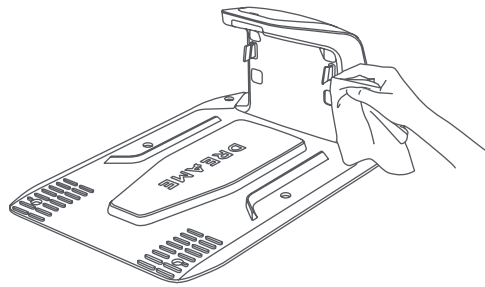
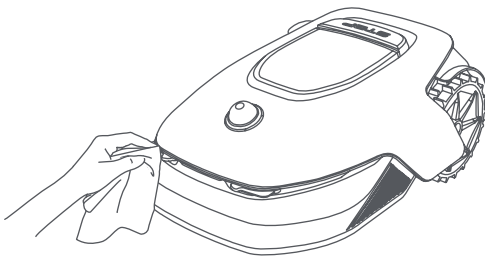


5. Use a lint-free cloth to carefully clean the LiDAR sensor.



• **Charging contacts:**

Use a clean cloth to clean the charging contacts on A1 and the charging station. Keep the charging contacts dry after cleaning.



9.2 Replacement of the components

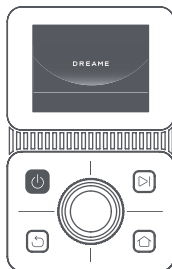
• **Replacement of the blades**

To keep the blades sharp, please replace the blades regularly. It is recommended to replace the blades every **6-8 weeks** or sooner. Please only use Dreame original blades.

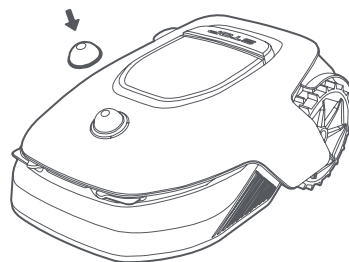
⚠ Warning: Please turn off A1 and wear protective gloves before replacing the blades.

Note: Please replace all three blades at the same time to ensure a balanced cutting system. Replace the receptacles as well when replacing the blades because worn receptacles can make the blades loose and cause injury. This ensures that all blades and receptacles wear at the same speed.

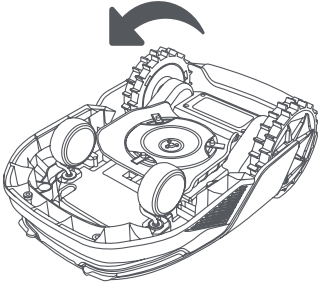
1. Turn off A1.



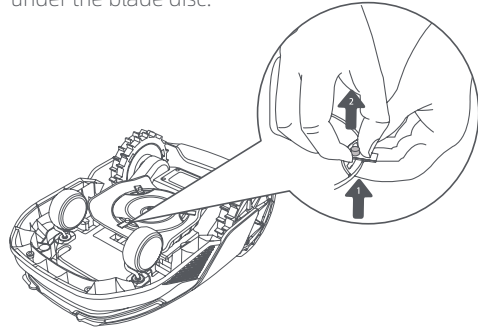
2. Make sure the LiDAR protective cover is on.



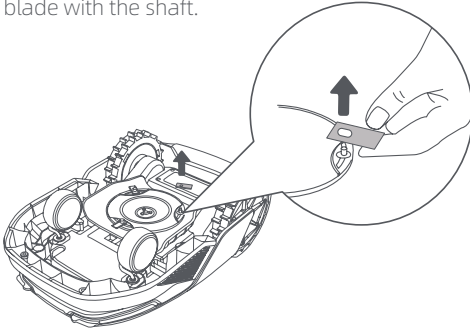
3. Put A1 on a soft surface and turn it upside down.



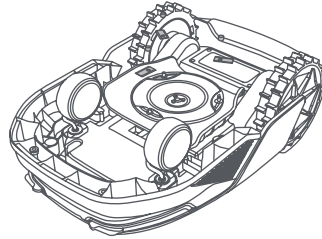
4. Remove the receptacle by pressing the button under the blade disc.



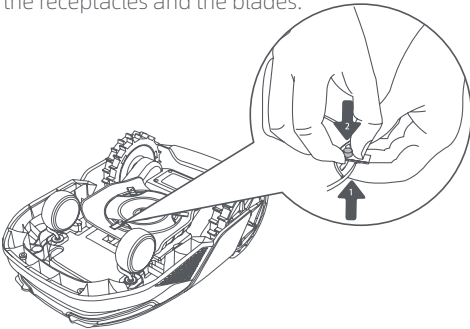
5. Remove the blade by aligning the hole of the blade with the shaft.



6. Remove 3 blades and receptacles.



7. Press the button under the blade disc and align the hole of the receptacle with the shaft to fasten the receptacles and the blades.

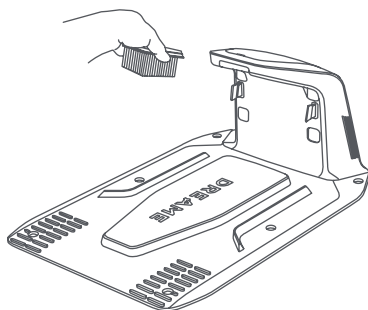


8. Make sure the blades can rotate freely.

• Replacement of the cleaning brush

When the cleaning brush for the LiDAR sensor wears out, its bristles may fray or deteriorate, affecting its cleaning performance. Please replace the cleaning brush regularly to keep a good cleaning result. It is recommended to replace the cleaning brush every **12 months** or sooner.

Note: Before replacing the cleaning brush, please make sure to unplug the charging station.



10 Battery

For long-term storage, charge A1 every **6 months** to protect the battery. Battery damage caused by over-discharge is not covered by the limited warranty. Do not charge the battery at an ambient temperature **above 45° C (113° F)** or **below 6° C (43° F)**. The long-term storage temperature for the battery should be **between -10 and 35° C (14 and 95° F)**. To minimize the damage, the recommended storage temperature for the battery is **between 0 and 25° C (32 and 77° F)**.

Note: The lifespan of A1's battery depends on frequency of usage and hours of operation. If the battery is damaged or cannot be charged, do not dispose of the obsolete or faulty battery arbitrarily. Please obey local recycling regulations.

Low-power charging mode:

With low-power charging mode on, functions not related to charging will be disabled. (Display and network will be turned off.)

- To enable low-power charging mode, press and hold **Start** button and **Home** button together, and press **Back** button 5 times quickly at the same time. You will hear a voice prompt: Low-power charging mode is on.
- To disable low-power charging mode, restart A1 or press **Power** button 5 times quickly to turn off low-power charging mode.

11 Winter Storage

• A1

1. Charge the battery fully and turn A1 off.

2. Clean A1 thoroughly before putting it into storage in winter.
3. Put on the LiDAR protective cover and blade disc protective cover.
4. Store A1 inside in a dry place, at a temperature above **0° C**.

• Charging station

Unplug the charging station and store it in a dry and cool place, away from direct sunlight.

Note: If you have not used A1 for a long time, please remap your garden as significant changes to the garden environment may cause positioning errors.

12 Transport

For long distance transport, it is recommended to use the original packaging to protect A1.

⚠ Warning: Please turn A1 off before transporting it.

⚠ Warning: Before lifting A1, please make sure it is turned off. Lift the product by the rear with the blade disc away from your body.

13 Troubleshooting

Issue	Cause	Solution
A1 is not connected to the app.	<ol style="list-style-type: none"> 1. A1 is not within Wi-Fi signal coverage or Bluetooth range. 2. A1 is turned off or is restarting. 	<ol style="list-style-type: none"> 1. Check if A1 has completed the process of turning on. 2. Check if the router is working properly. 3. Move closer to A1 to establish a Bluetooth connection.
A1 lifted.	The wheel is not on the ground.	<ol style="list-style-type: none"> 1. Put A1 back on flat ground. 2. Enter the PIN code on A1 and confirm. 3. A1 can't cross objects higher than 4 cm. Please keep the ground even where it is working.
A1 tilted.	A1 tilts more than 37°.	<ol style="list-style-type: none"> 1. Put A1 back on flat ground. 2. Enter the PIN code on A1 to confirm. 3. A1 cannot climb slopes greater than 45% (24°).
A1 trapped.	A1 is trapped and fails to get out.	<ol style="list-style-type: none"> 1. Remove the surrounding obstacles and then retry. 2. Manually move A1 to a flat and open place inside the map and try starting the task again. If you continue to encounter this problem, please retry after A1 is in the charging station. 3. Check if there are holes in the ground. Fill in the holes before mowing to prevent A1 from being trapped. 4. Check if the surrounding grass is taller than 10 cm. You can adjust the obstacle avoidance height or use a push mower to mow the lawn in advance to prevent the A1 from being trapped. 5. If A1 is often trapped in this location, you can set it as a no-go zone.
Left/right rear wheel error	The wheel cannot rotate or the wheel motor has a problem.	<ol style="list-style-type: none"> 1. Clean the rear wheels and then retry. 2. If you continue to encounter this error, try restarting A1. 3. If the problem persists, please contact the after-sales service.
Blade disc can't rotate.	The blade disc cannot rotate normally or the cutting motor has a problem.	<ol style="list-style-type: none"> 1. Clean the blade disc and then retry. 2. Check if the surrounding grass is taller than 10 cm. You can use a push mower to mow the lawn in advance to prevent the blade disc from being blocked by tall grass. 3. Check if there is water under the blade disc. If there is any, move A1 to a dry place and then retry. 4. If you continue to encounter this error, try restarting A1. 5. If the problem persists, please contact the after-sales service.
Bumper error.	The front bumper sensor is constantly triggered.	<ol style="list-style-type: none"> 1. Check if A1 is trapped somewhere. 2. Gently tap the bumper and make sure it bounces back. 3. If you continue to encounter this error, try restarting A1.

Issue	Cause	Solution
		4. If the problem persists, please contact the after-sales service.
Charging error.	A1 docks in the charging station, but the charging current or voltage has a problem.	<ol style="list-style-type: none"> 1. Check if the charging station is correctly connected to power. 2. Check if the charging contacts on A1 and the charging station are clean. 3. After checking is finished, try docking A1 in the charging station again. 4. If the problem persists, please contact the after-sales service.
Battery temperature too high.	Battery temperature is $\geq 60^{\circ}\text{C}$.	<ol style="list-style-type: none"> 1. Use A1 where ambient temperature is below 40°C. You can wait until the battery temperature decreases automatically. 2. You can turn off A1 and restart it after a while. 3. If the problem persists, please contact the after-sales service.
LiDAR is blocked.	LiDAR is blocked (for example the LiDAR protective cover is not removed).	<ol style="list-style-type: none"> 1. Remove the lidar protective cover and then retry. 2. If lidar on the top of the robot is very dirty, clean it with a lint-free cloth and then retry.
LiDAR malfunction.	LiDAR is very dirty or there is a sensor error.	<ol style="list-style-type: none"> 1. Check if the lidar is dirty. Clean it if necessary and then try again. 2. If you continue to encounter this error, try restarting the robot. 3. If the problem persists, please contact the after-sales service.
Positioning signal is weak. Waiting for better signal.	When detecting that the positioning signal is weak, A1 will automatically pause and wait until the positioning signal is recovered to resume working.	<ol style="list-style-type: none"> 1. Check if the current weather is adverse. Heavy rain can affect the robot's positioning. It will automatically resume working after the positioning signal is recovered. 2. If the positioning error persists, try remotely controlling the robot back to the station and then start the task.
A1 is lost.	Positioning is lost.	<ol style="list-style-type: none"> 1. Check if the LiDAR on the top of A1 is dirty. Dirt will affect the positioning. 2. Manually move A1 to an open place inside the map and try starting the task again. 3. If the positioning is not recovered, remote control A1 back to the charging station via the app, and then start the mowing task.
Sensor error.	Sensor error.	<ol style="list-style-type: none"> 1. Restart A1 and retry. 2. If the problem persists, please contact the after-sales service.
A1 is in the no-go zone.	A1 is in the no-go zone.	<ol style="list-style-type: none"> 1. Manually move the robot out of the no-go zone and then retry. 2. Remotely control the robot through the app to move it out of the no-go zone, and then retry.

Issue	Cause	Solution
A1 is outside the map.	A1 is outside the map.	<ol style="list-style-type: none"> 1. Manually move the robot inside the map, and then retry. 2. Remote control the robot back inside the map via the app, and then retry.
Emergency stop is activated.	The Stop button on A1 is pressed.	Enter PIN code on A1 to deactivate the emergency stop.
Low battery. A1 will shut down soon.	Battery level is $\leq 10\%$.	Dock A1 in the charging station to charge.
A1 is away from the map. Risk of being stolen	A1 is away from the map.	<ol style="list-style-type: none"> 1. Enter PIN code to verify. 2. You can disable the Off-Map Alarm in settings in the app.
Failed to return to the charging station.	A1 cannot find the charging station when returning to the charging station.	<ol style="list-style-type: none"> 1. Check if there are obstacles blocking A1. Remove the obstacles and retry. 2. Remote control A1 back to the charging station via the app.
Failed to dock in the charging station.	A1 finds the charging station but fails to dock.	<ol style="list-style-type: none"> 1. Check if the reflective films on the charging station are dirty or blocked. 2. Check if there are obstacles in front of the charging station. 3. Check if the charging station is moved. 4. You can manually move A1 to the charging station.
Positioning failed.	Positioning fails when A1 tries to start a mowing task.	<ol style="list-style-type: none"> 1. Manually move A1 to a flat and open place inside the map and try starting the task again. 2. If you continue to encounter this error, please retry after A1 is in the charging station.
Battery temperature is high.	Battery temperature is $\geq 45^{\circ}\text{C}$.	<ol style="list-style-type: none"> 1. Charging may fail when battery temperature is above 45°C. 2. Use A1 where ambient temperature is below 40°C.
Battery temperature is low.	Battery temperature is $\leq 6^{\circ}\text{C}$.	<ol style="list-style-type: none"> 1. Charging may fail when battery temperature is below 6°C. 2. Use A1 where ambient temperature is above 6°C.

14 Specifications

Basic information	Product name	Dreame Roboticmower
	Brand	Dreame
	Dimensions	643 × 436.5 × 261 mm (25.3 × 17.2 × 10.2 in)
	Weight (battery included)	12 kg (26 lbs)
Mowing	Recommended working capacity	2000 m ² (0.5 acre)
	Mowing efficiency	Standard: 120 m ² (0.03 acre)/h Efficient: 200 m ² (0.05 acre)/h
	Mowing height	30~70 mm (1.2~2.8 in)
	Mowing width	22 cm (8.7 in)
	Charging time ^[1]	65 min
Noise emissions	Sound power level LWA	64 dB(A)
	Sound power uncertainties KWA	3 dB(A)
	Sound pressure level LpA	56 dB(A)
	Sound pressure uncertainties KpA	3 dB(A)
Working condition	Operating temperature	0~50°C (32~122°F) Recommended: 10~35°C (50~95°F)
	Long-term storage temperature	-10~35°C (14~95°F) Recommended: 0~25°C (32~77°F)
	IP-classification	Mower: IPX6 Charging station: IPX4 Power supply: IP67
	Maximum slope for mowing area	45% (24°)
Connectivity	Bluetooth frequency range	2400.0~2483.5 MHz
	Wi-Fi	Wi-Fi 2.4 GHz (2400~2483.5M)
	Link service (optional) ^[2]	LTE-FDD: B1/3/7/8/20/28A LTE-TDD: B38/40/41
	GNSS (optional) ^[3]	GPS/GLONASS/BDS/Galileo/QZSS
Driving motor	Driving speed under remote control	0.45 m/s
	Driving speed when mowing	Standard: 0.35 m/s Efficient: 0.6 m/s
Cutting motor	Speed	2200 r/min

Battery (mower)	Battery type	Lithium-ion battery
	Rated capacity	5000 mAh
	Rated voltage	18 V
Power supply	Input voltage	100~240 V
	Output voltage	20 V
	Output current	3 A
Charging station	Input voltage	20 V
	Output voltage	20 V
	Input current	3 A
	Output current	3 A

[1] Charging time applies when A1 automatically returns to the charging station at low battery.

[2] Requires the installation of Link module.

[3] Requires the installation of Link module.

Note: The specifications are subject to change as we continually improve our product. For the latest information, please visit our website at global.dreame.tech.com.